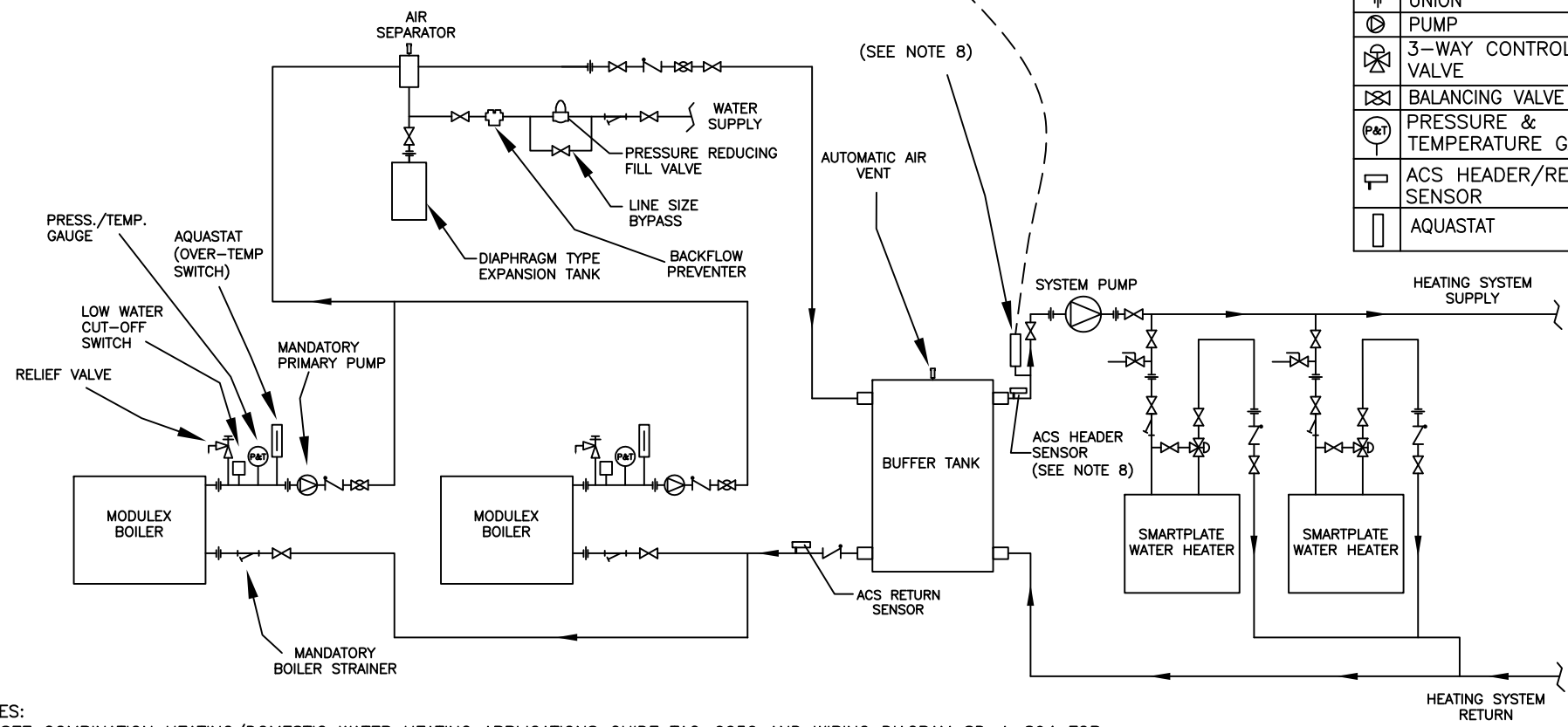


ACS Panel

LEGEND

	STRAINER
	STOP VALVE
	CHECK VALVE
	DRAIN VALVE
	UNION
	PUMP
	3-WAY CONTROL VALVE
	BALANCING VALVE
	PRESSURE & TEMPERATURE GAUGE
	ACS HEADER/RETURN SENSOR
	AQUASTAT



NOTES:

- SEE COMBINATION HEATING/DOMESTIC WATER HEATING APPLICATIONS GUIDE TAG-0050 AND WIRING DIAGRAM SD-A-894 FOR COMPLETE APPLICATION AND CONTROLS DETAILS.
- THE ABOVE DIAGRAM DEPICTS THE COMBINATION HEATING/DOMESTIC WATER PIPING ONLY. FOR GAS PIPING AND THE REST OF THE WATER-SIDE PIPING DETAILS, REFER TO APPROPRIATE MODULEX BOILER INSTALLATION DRAWINGS.
- FOR ACTUAL SIZES AND LOCATIONS OF PIPING AND OTHER CONNECTIONS TO THE BOILER, SEE APPROPRIATE MODULEX BOILER DIMENSIONAL DRAWING.
- REFER TO SMARTPLATE APPLICATIONS GUIDE, SP-1010, FOR BUFFER TANK SIZING.
- REFER TO SMARTPLATE INSTALLATION DRAWINGS FOR RECOMMENDED DOMESTIC PIPING INSTALLATION:
SD-A-772, SD-A-773, SD-A-774, SD-A-775, SD-A-776, SD-A-777
- BOILER PUMP MUST BE SIZED TO PROVIDE THE APPROPRIATE FLOW AT THE DESIGN ΔT OF BOILER PLANT.
BOILER PUMP MUST MAINTAIN MODULEX BOILER(S) REQUIRED MINIMUM FLOW:
MLX 303 - 11 GPM MINIMUM FLOW MLX 757 - 28 GPM MINIMUM FLOW
MLX 454 - 17 GPM MINIMUM FLOW MLX 909 - 34 GPM MINIMUM FLOW
MLX 606 - 22 GPM MINIMUM FLOW MLX 1060 - 39 GPM MINIMUM FLOW
- THIS IS A TYPICAL INSTALLATION DRAWING. LOCAL CODES AND AUTHORITIES SHOULD BE CONSULTED.
- INSTALL THE ACS HEADER SENSOR AND THE AQUASTAT IN THE BUFFER TANK SYSTEM SUPPLY PIPING.
- THE SYSTEM PUMP SHALL BE OPERATED CONSTANTLY OR CONTROLLED BY THE BUILDING CONTROLS.

AERCO INTERNATIONAL, INC. BLAUVELT, NY 10913		
MODULEX BOILER/SMARTPLATE - COMBINATION HEATING/DHWH PIPING WITH BOILER SIDE BUFFER TANK - TEMPERATURE BOOST APPLICATIONS		
DWN. BY <u>CZ</u> DATE <u>030712</u>	SD-A-913	REV. B
SCALE <u>NTS</u>		
APPD. _____ DATE _____		