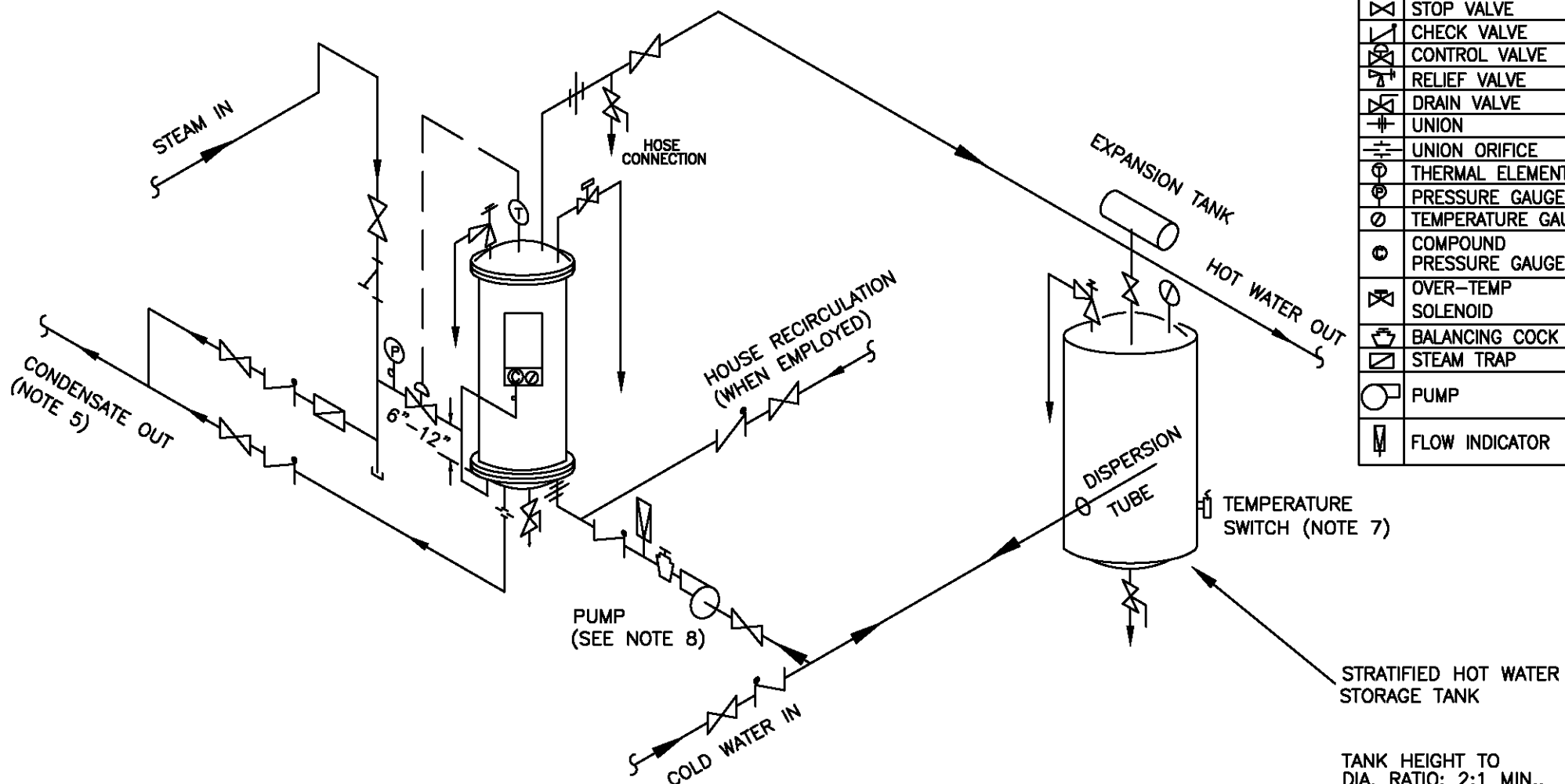


LEGEND

	STRAINER
	STOP VALVE
	CHECK VALVE
	CONTROL VALVE
	RELIEF VALVE
	DRAIN VALVE
	UNION
	UNION ORIFICE
	THERMAL ELEMENT
	PRESSURE GAUGE
	TEMPERATURE GAUGE
	COMPOUND PRESSURE GAUGE
	OVER-TEMP SOLENOID
	BALANCING COCK
	STEAM TRAP
	PUMP
	FLOW INDICATOR



NOTES:

- 1) FOR ACTUAL SIZES AND LOCATIONS OF PIPING AND OTHER CONNECTIONS TO THE HEATER, SEE DIMENSIONAL DRAWING.
- 2) PIPING TO THE UPPER HEATER HEAD SHOULD BE PROVIDED WITH UNIONS OR FLANGES WHICH ARE LOCATED BEYOND THE OUTSIDE DIAMETER OF THE HEAD TO PERMIT REMOVAL OF THE HEAD AND SHELL.
- 3) THE CONTROL VALVE SHOULD BE LOCATED 6" TO 12" ABOVE THE LOWER HEAD FLANGE. THE PIPING BETWEEN THE VALVE AND HEATER CONNECTION SHOULD BE AS SHORT AS POSSIBLE.
- 4) REDUCERS, ON THE WATER INLET SIDE, SHOULD BE LOCATED ADJACENT TO THE HEATER. EXPANSION FITTINGS, ON THE WATER INLET SIDE, SHOULD BE LOCATED AS FAR AS POSSIBLE FROM THE HEATER.
- 5) CONDENSATE RETURN PIPING SHOULD BE ARRANGED TO PERMIT THE CONDENSATE TO DRAIN FREELY, BY GRAVITY, FROM THE LOWER HEATER HEAD.
- 6) DRAIN VALVE SHOULD BE PIPED DIRECTLY TO A FLOOR DRAIN. RELIEF VALVE & OVER-TEMP SOLENOID VALVE SHOULD BE PIPED VERTICALLY TO A HEIGHT 19" ABOVE THE FLOOR.
- 7) MOUNT TEMPERATURE SWITCH 1/3 UP FROM THE BOTTOM OF THE TANK, SWITCH WILL TURN PUMP ON AND OFF.
- 8) PUMP SHOULD BE CAPABLE OF HEATER'S RATED FLOW AT DESIGN TEMPERATURE RISE.

TANK HEIGHT TO DIA. RATIO: 2:1 MIN., 3:1 PREFERRED

AERCO INTERNATIONAL, INC.
NORTHVALE, NJ 07647

SW1A+, SW1B+, OR B+ WATER WIZARD
STEAM TO WATER HEAT EXCHANGER
SINGLE UNIT WITH STRATIFIED TANK

DWN. BY SCD DATE 112398
SCALE NTS
APPD. MPC DATE 122298

SD-A-328

REV.
E