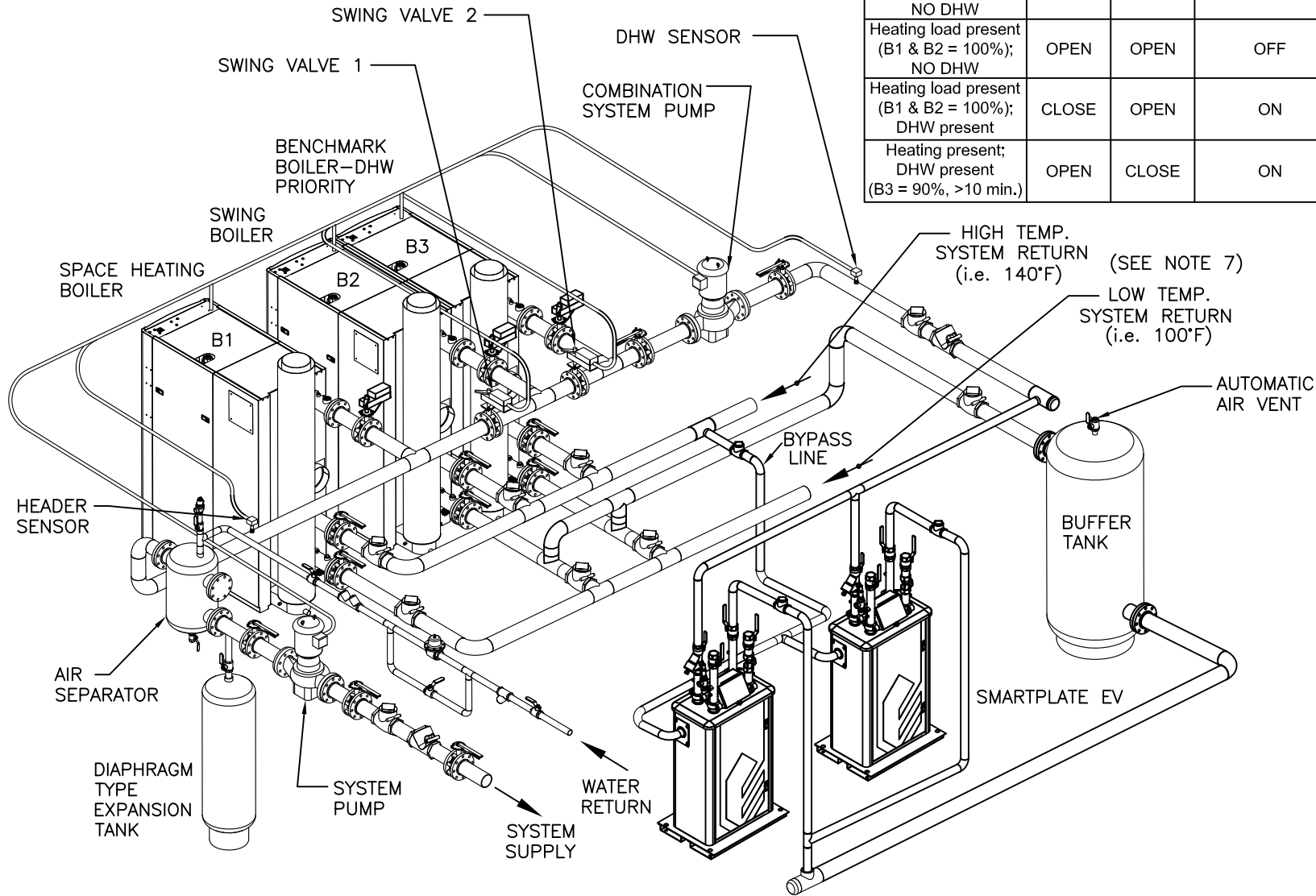



	SWING VALVE 1	SWING VALVE 2	COMBINATION SYSTEM PUMP	B2 - BLDG (SWING)	B3 - DHW
Heating + DHW loads present	CLOSE	OPEN	ON	SPACE HEATING	DHW
Heating load present (<100%); NO DHW	CLOSE	OPEN	OFF	SPACE HEATING	STANDBY
Heating load present (B1 & B2 = 100%); NO DHW	OPEN	OPEN	OFF	SPACE HEATING	SPACE HEATING
Heating load present (B1 & B2 = 100%); DHW present	CLOSE	OPEN	ON	SPACE HEATING	DHW
Heating present; DHW present (B3 = 90%, >10 min.)	OPEN	CLOSE	ON	DHW	DHW



NOTES:

- SEE COMBINATION HEATING/DOMESTIC WATER HEATING APPLICATIONS GUIDE TAG-0019 FOR COMPLETE APPLICATION AND CONTROLS DETAILS.
- FOR SIZES AND LOCATIONS OF PIPING AND OTHER CONNECTIONS TO THE BOILER, SEE APPROPRIATE BENCHMARK BOILER DIMENSIONAL DRAWING.
- REFER TO SMARTPLATE INSTALLATION DRAWINGS FOR RECOMMENDED DOMESTIC PIPING INSTALLATION: SD-A-1198, SD-A-1199, SD-A-1200, SD-A-1201, SD-A-1202, SD-A-1203
- BOILER PUMP MUST BE SIZED TO PROVIDE THE APPROPRIATE FLOW AT THE DESIGN ΔT OF BOILER PLANT. BOILER PUMP MUST MAINTAIN BENCHMARK BOILER(S) REQUIRED MINIMUM FLOW.
- THIS IS A TYPICAL INSTALLATION DRAWING. LOCAL CODES AND AUTHORITIES SHOULD BE CONSULTED.
- THE COMBINATION SYSTEM PUMP IS CONTROLLED BY EDGE, AS PER REFERENCE DRAWING SD-A-1179.
- DUAL RETURNS ARE OPTIONAL. FEATURE CAN BE SELECTED WHEN CONFIGURING A BOILER ORDER.

	100 CRITANI DRIVE BLAUVELT, NY 10913 aerco.com
	BENCHMARK® W/ EDGE & BOILER/SMARTPLATE COMBINATION PLANT WITH MODULATING ISOLATION VALVES & TWO SWING VALVES PIPING APPLICATION
DWN.BY <u>K.S.</u> DATE <u>061119</u> SCALE <u>NTS</u> REV.BY <u>K.S.</u> DATE <u>062023</u>	SD-A-1188
	REV. <u>D</u>