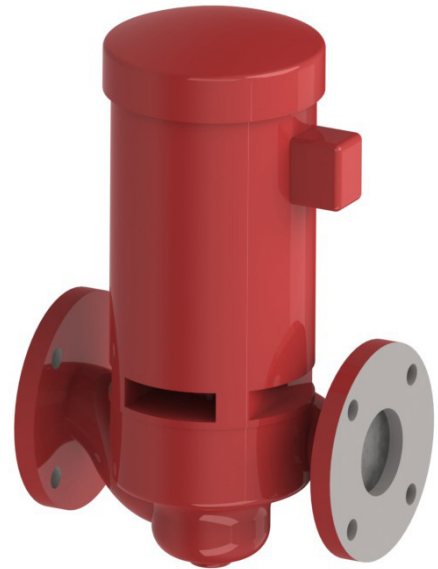


## Technical Data Sheet

# Constant Speed Pump Kits

These constant speed pumps are specifically selected for hydronic heating. They are ideal for the boiler loop of Mopdulex EXT and AM Series Boiler installations. These kits include a circuit setter which allows for setting flow rates that meet the minimum and do not exceed the maximum allowed through the boiler. Pump Kits 99127-1 to 99127-8 are in-line and permanently lubricated for ease of maintenance with a cast iron body. Pump Kits 99208-1 to 99208-7 incorporate 'back-pull-out' design which allows service without disturbing the piping.



Actual pump may vary from illustration

## Features

- In-line mounted pump design
- Cast Iron Body
- Carbon/Stainless Steel shaft
- Durable Carbon/Silicon-carbide seals
- Permanently lubricated/grease lubricated motors
- Max. working pressure: 150 psi
- Max. operating temperature: 225°F

## Selection Tables

	50°F Temp Rise			40°F Temp Rise			30°F Temp Rise			20°F Temp Rise		
	Flow (GPM)	ΔP (Ft/Hd)	Pump Kit	Flow (GPM)	ΔP (Ft/Hd)	Pump Kit	Flow (GPM)	ΔP (Ft/Hd)	Pump Kit	Flow (GPM)	ΔP (Ft/Hd)	Pump Kit
EXT 450 2S	18	2.1	99127-1	22	3.3	99127-1	30	5.7	99127-2	42	11.8	99127-3
EXT 600 2S	24	1.7	99127-1	30	2.6	99127-2	39	4.6	99127-3	56	9.2	99127-4
EXT 800 2S	30	1.6	99127-2	37	2.6	99127-2	49	4.6	99127-3	71	9.7	99127-4
EXT 1100 2S	41	1.8	99127-3	52	2.7	99127-3	69	4.8	99127-4	99	9.5	99127-9

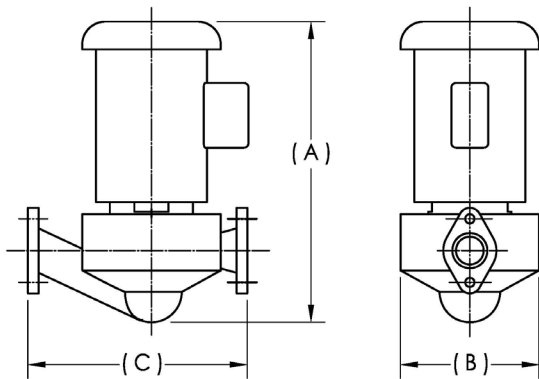
	50°F Temp Rise			40°F Temp Rise			30°F Temp Rise			25°F Temp Rise		
	Flow (GPM)	ΔP (Ft/Hd)	Pump Kit	Flow (GPM)	ΔP (Ft/Hd)	Pump Kit	Flow (GPM)	ΔP (Ft/Hd)	Pump Kit	Flow (GPM)	ΔP (Ft/Hd)	Pump Kit
EXT 1500 2S	56	2.6	99127-6	70	3.6	99127-7	94	5.2	99127-7	113	7.9	99208-4
EXT 2300 2S	84	3.3	99127-7	106	4.9	99127-7	141	9.5	99208-5	169	16.4	99208-7
EXT 2600 2S	99	3.6	99127-7	123	5.2	99208-3	164	9.8	99208-5	197	17.7	99208-7
EXT 3000 2S	113	3	99127-7	141	4.6	99208-3	188	8.5	99208-6	225	13.1	99208-7

	40°F Temp Rise			30°F Temp Rise			25°F Temp Rise		
	Flow [GPM]	ΔP [Ft/Hd]	Pump Kit	Flow [GPM]	ΔP [Ft/Hd]	Pump Kit	Flow [GPM]	ΔP [Ft/Hd]	Pump Kit
AM 399				24.5	13	99127-1	29.4	19	99127-10
AM 500	24	14	99127-1	30.7	25	99127-10	36.8	35	99208-2
AM 750	36.0	14	99127-10	46	23	99127-9	55.2	32	99208-2
AM 1000	48	16	99127-9	61.3	27	99208-2	73.6	39	99208-2

See Primary loop design guides C400.2S (MLX EXT) and C400.3 (AM Boiler) for details.

## Dimensions

	Electrical Requirement	FLA	hp	Flange Size	A	B	C
99127-1	115V/1PH/60Hz	2.1A	1/6	1-1/2" NPT	8-5/8"	4-3/8"	6-3/8"
99127-2	115V/1PH/60Hz	2.1A	1/6	1-1/2" NPT	8-5/8"	4-3/8"	6-3/8"
99127-3	115V/1PH/60Hz	4.8A	2/5	2" NPT	10-3/4"	5-1/8"	8-1/2"
99127-4	115V/1PH/60Hz	4.8A	2/5	2" NPT	10-3/4"	5-1/8"	8-1/2"
99127-9	115V/208-30V/1PH/60Hz	13.8A (115V)/6.9A (230V)	3/4	2" NPT	17-1/2"	8"	11-1/2"
99127-6	115V/1PH/60Hz	2.1A	1/6	2" NPT	9-15/16"	4-5/8"	8-1/2"
99127-7	115V/1PH/60Hz	4.8A	2/5	3" NPT	10-3/4"	5-1/8"	8-1/2"
99127-10	115V/208-30V/1PH/60Hz	13.8A (115V)/6.9A (230V)	3/4	2" NPT	17-1/2"	8"	11-1/2"
99208-2	115V/208-30V/1PH/60Hz	24A (115V)/12A (230V)	2	2" NPT	18-1/4"	8"	12"
99208-3	115V/208-30V/1PH/60Hz	9.8A (115V)/4.9A (230V)	1/2	3" NPT	16-1/2"	8"	12"
99208-4	115V/208-30V/1PH/60Hz	13.8A (115V)/6.9A (230V)	3/4	3" NPT	17-1/2"	8"	12"
99208-5	115V/208-30V/1PH/60Hz	16A (115V)/8A (230V)	1	3" NPT	18-1/4"	8"	12"
99208-6	115V/208-30V/1PH/60Hz	20A (115V)/10A (230V)	1-1/2	3" NPT	18-1/4"	8"	12"
99208-7	115V/208-30V/1PH/60Hz	34A (115V)/17A (230V)	3	3" NPT	18-3/4"	8"	12"



Actual pump may vary from illustration



Heating and Hot Water Solutions

AERCO International, Inc. • 100 Oritani Drive • Blauvelt, NY 10913  
 USA: T: (845) 580-8000 • Toll Free: (800) 526-0288 • AERCO.com