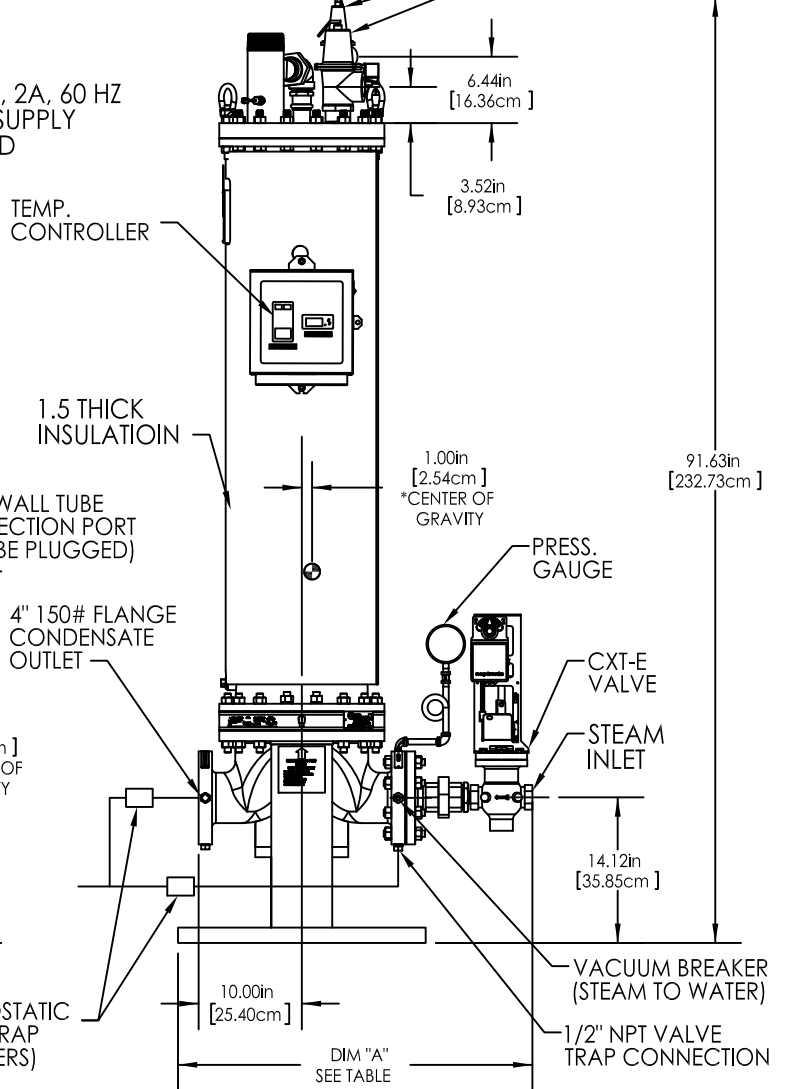
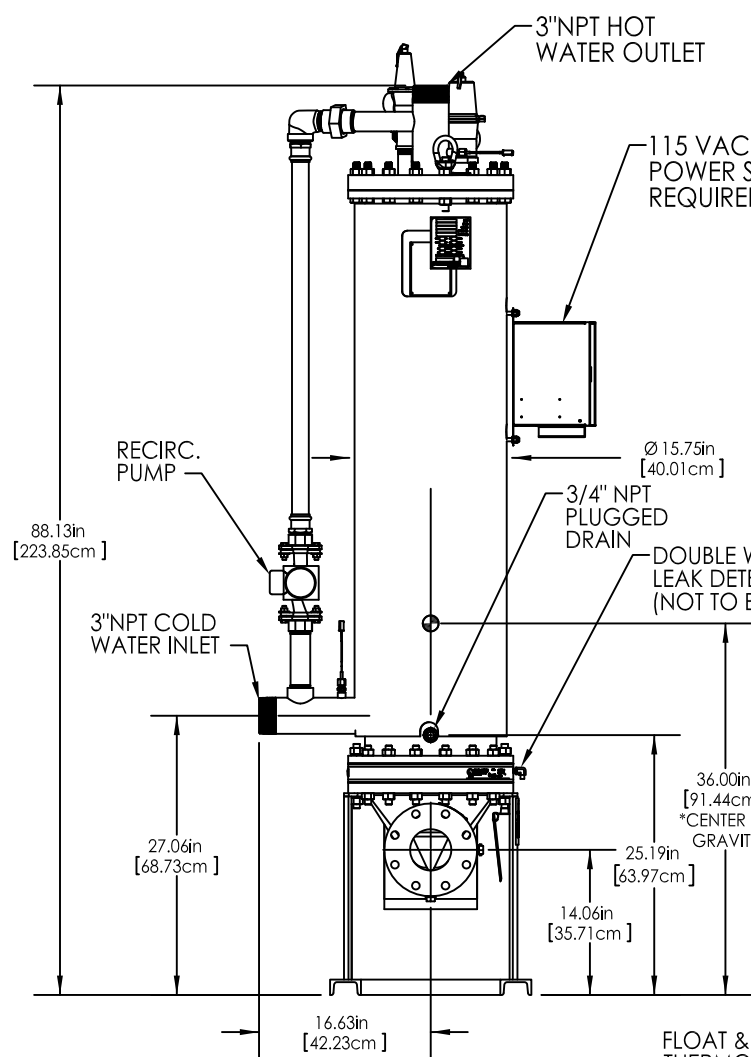
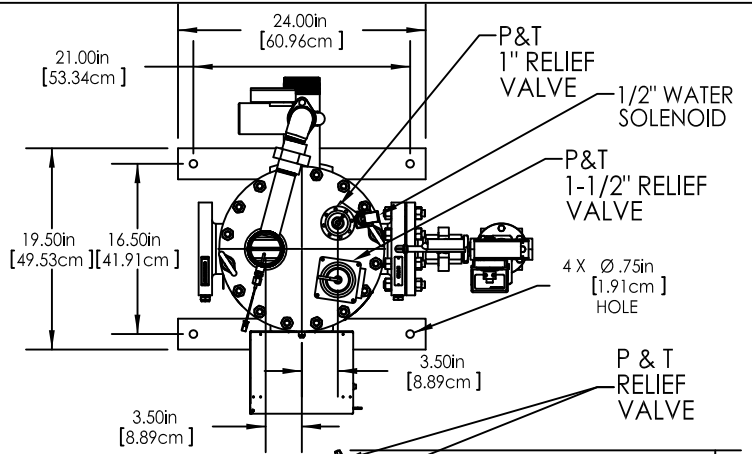


MATERIALS OF CONSTRUCTION	
SHELL	304 S.S. SA-240; SCH. 10S
HEADS	UPPER, 1.0" THICK PLT., SA-240, 304L S.S. LOWER, CAST DUCTILE IRON SA-395
TUBES	COPPER, SB-111 DOUBLE WALL, OUTER, 0.750"OD x 0.049" WALL INNER, 0.625"OD x 0.025" WALL
TUBESHEET	UPPER TUBESHEET: 0.25" NAVAL BRASS, SB-171, CDA 464 LOWER TUBESHEET LINER: 0.25" NAVAL BRASS, SB-171, CDA 464 LOWER TUBESHEET: 0.88" SA-515, GR. 70 C.S



HEAT EXCHANGER DESIGN STANDARDS			
	MAX. WORKING PRESSURE, PSIG (kPa)	MAX. TEMP. °F (°C)	TEST PRESS. PSIG (kPa)
SHELL SIDE	185 (1276)	350 (177)	278 (1917) COLD
Cu TUBE SIDE	52(359)	300 (149)	500 (3447)
CuNi TUBE SIDE	200(1379)	388 (198)	500 (3447)

*NOTE: CENTER OF GRAVITY IS WITHOUT VALVE LINE.

ASME B&PV CODE SEC. VIII, DIV. 1 STAMP U

RELIEF VALVES SET AT °F, PSI

MODEL SWDW-68/ **/ EC**
(VALVE SIZE)

CONTROL VALVE SIZE IN(CM)	DIM "A" in./cm
1"(2.54) SCREWED END	35.43/ 89.99
1-1/4(3.18) SCREWED END	35.58/ 90.37
1-1/2"(3.81) SCREWED END	34.35/ 87.25
2"(5.08) SCREWED END	35.00/ 88.90
2-1/2"(6.35) 150# ANSI FLANGED END	40.12/ 101.90
3"(7.62) 150# ANSI FLANGED END	40.87/ 103.81
4"(10.18) 150# ANSI FLANGED END	35.93/ 91.26

OPERATING CONDITIONS	
SHELL	CAPACITY, GPM(L/S) IN/OUT TEMP. °F(°C)
TUBES	FLOW LB/HR (Kg/S) PRESSURE TO VALVE, PSIG(kPa)

AERCO 100 ORITANI DRIVE | BLAUVELT, NY 10913
A WATTS Brand aereco.com

DW-68 S/W DOUBLE WALL HEATER PACKAGED WITH CXT-E VALVE DIMENSIONAL DRAWING

DWN BY: BH	DATE: 04/21/2014	DWG. NO.:	REV
SCALE: NTS	SIZE:	AP-A-959	C
CHRD BY:	APPD:		