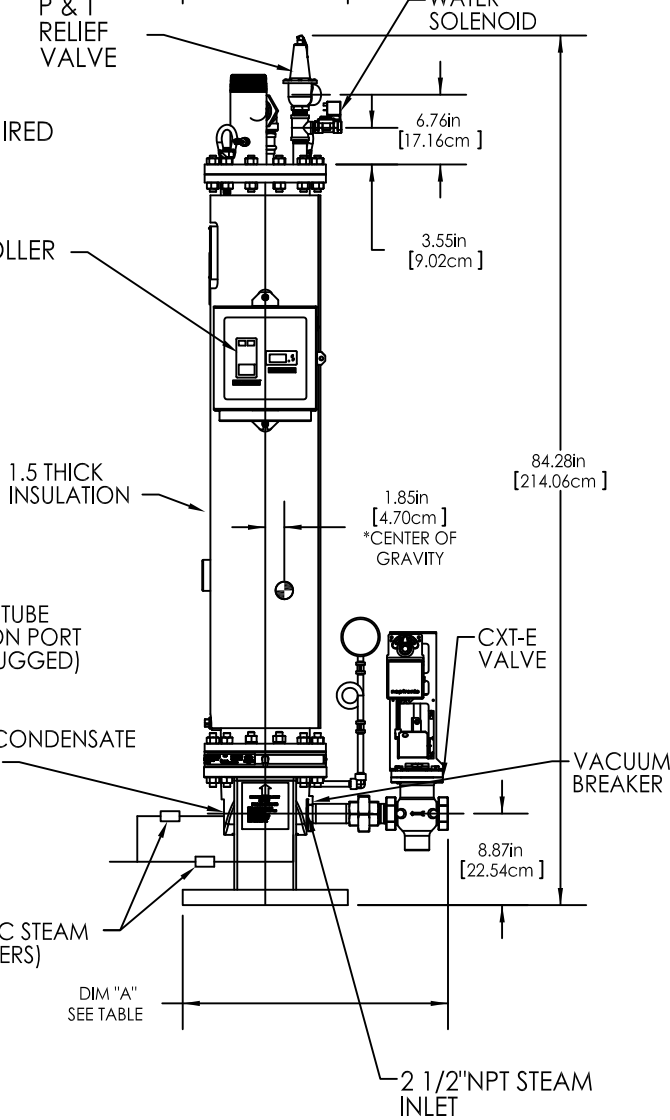
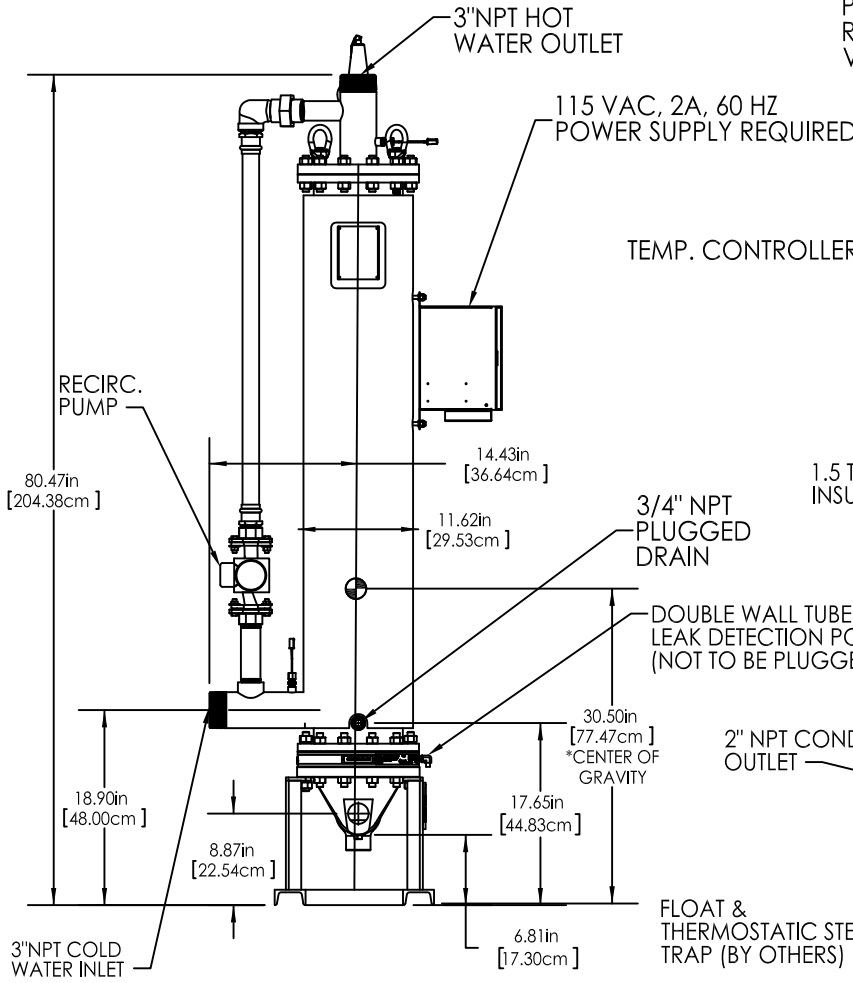
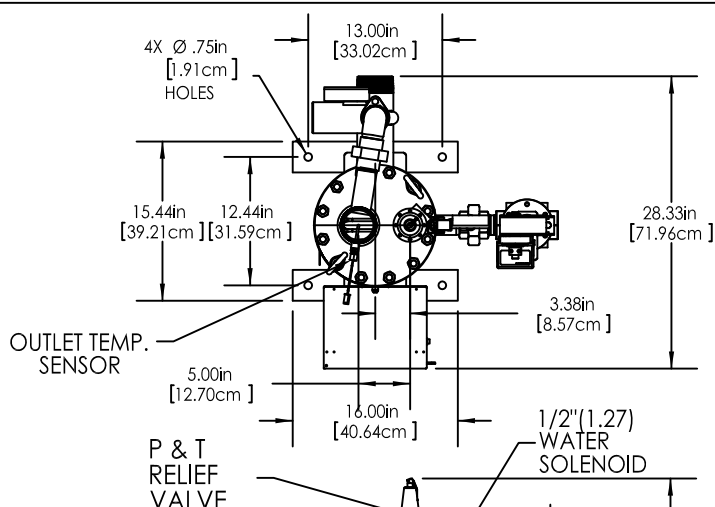


| MATERIALS OF CONSTRUCTION |   |
|---------------------------|---|
| SHELL                     | 304 S.S. SA-240; SCH. 10S   |
| HEADS                     | UPPER, 1.0" THICK PLT., SA-240, 304L S.S.<br>LOWER, CAST DUCTILE IRON SA-395  |
| TUBES                     | COPPER, SB-111 DOUBLE WALL,<br>OUTER, 0.750"OD x 0.049" WALL<br>INNER, 0.625"OD x 0.025" WALL   |
| TUBESHEET                 | UPPER TUBESHEET: 0.25" NAVAL BRASS,<br>SB-171, CDA 464<br>LOWER TUBESHEET LINER: 0.25" NAVAL BRASS,<br>SB-171, CDA 464<br>LOWER TUBESHEET: 0.88" SA-515, GR. 70 C.S |



\*NOTE: CENTER OF GRAVITY IS WITHOUT VALVE LINE.

ASME B&PV CODE SEC. VIII, DIV. 1      STAMP U

RELIEF VALVES SET AT      °F,      PSI

**MODEL SWDW-24/**    / **EC**  
(VALVE SIZE)

| HEAT EXCHANGER DESIGN STANDARDS |                                   |                    |                        |
|---------------------------------|-----------------------------------|--------------------|------------------------|
|                                 | MAX. WORKING PRESSURE, PSIG (kPa) | MAX. TEMP. °F (°C) | TEST PRESS. PSIG (kPa) |
| SHELL SIDE                      | 185 (1276)                        | 400 (204)          | 278 (1917) COLD        |
| Cu TUBE SIDE                    | 52 (359)                          | 300 (149)          | 500 (3447)             |
| CuNi TUBE SIDE                  | 200 (1379)                        | 388 (198)          | 500 (3447)             |

| CONTROL VALVE SIZE IN(CM)         | DIM "A" IN/CM |
|-----------------------------------|---------------|
| 1"(2.54) SCREWED END              | 25.9/65.8     |
| 1-1/4(3.18) SCREWED END           | 25.6/65.0     |
| 1-1/2(3.81) SCREWED END           | 25.7/65.3     |
| 2"(5.08) SCREWED END              | 27.2/69.1     |
| 2-1/2(6.35) 150# ANSI FLANGED END | 31.4/79.8     |
| 3"(7.62) 150# ANSI FLANGED END    | 32.3/82.0     |
| 4"(10.18) SEE AP-A-928            | SEE AP-A-928  |

| OPERATING CONDITIONS |                              |
|----------------------|------------------------------|
| SHELL                | IN/OUT TEMP. °F(°C)          |
| CAPACITY, GPM(L/S)   |                              |
| TUBES                | PRESSURE TO VALVE, PSIG(kPa) |
| FLOW LB/HR (Kg/S)    |                              |

**GAERCO**  
A WATTS Brand

100 ORITANI DRIVE | BLAUVELT, NY 10913  
aerco.com

**DW-24 S/W DOUBLE WALL HEATER  
PACKAGED WITH CXT-E VALVE  
DIMENSIONAL DRAWING**

|                      |                         |                 |          |
|----------------------|-------------------------|-----------------|----------|
| DWN BY: <u>BH</u>    | DATE: <u>05/28/2013</u> | DWG. NO.:       | REV      |
| SCALE: <u>NTS</u>    | SIZE:                   | <b>AP-A-924</b> | <b>E</b> |
| CHKD BY: <u>APPD</u> |                         |                 |          |