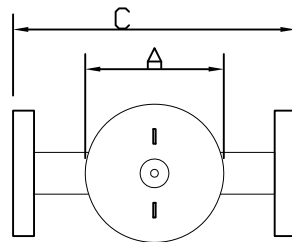


PART NUMBER	CONNECTION SIZE	MAX FLOW RATE FOR EACH LOOP	EMPTY WEIGHT	FILLED WEIGHT
24238-2.5	2.50" FLANGE ANSI 150 LB	63 gpm	110	160
24238-3.0	3.00" FLANGE ANSI 150 LB	173 gpm	180	343
24238-4.0	4.00" FLANGE ANSI 150 LB	173 gpm	205	397
24238-5.0	5.00" FLANGE ANSI 150 LB	293 gpm	365	791

PART NUMBER	A	B	C	D	E
	DIA. (INCH)	MAX. (INCH)	(INCH)	(INCH)	(INCH)
24238-2.5	6-5/8	40	13-1/4	7-1/2	25
24238-3.0	10-3/4	50	17-1/2	10-3/8	29-1/4
24238-4.0	10-3/4	59	20	10-1/2	38
24238-5.0	14	77	23	15-1/4	46-1/2



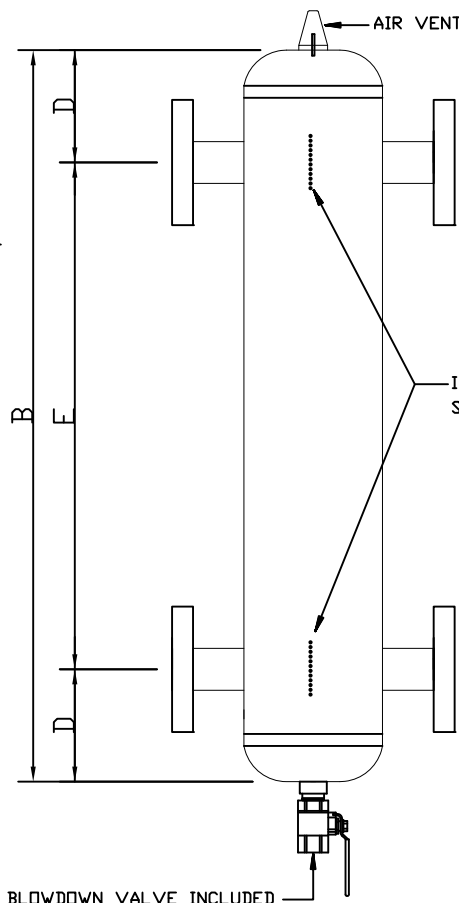
SPECIFICATIONS

BODY: STEEL

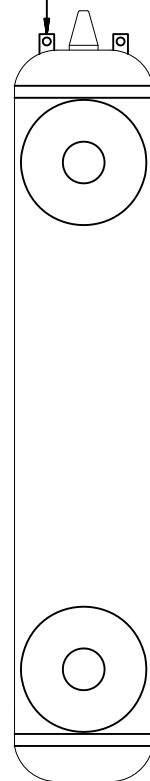
MAXIMUM WORKING PRESSURE: 125 PSI

MAXIMUM OPERATING TEMPERATURE: 270°F

ASME Section VIII Div. 1



(2) LIFTING LUGS  
(FOR 24238-5.0)



**AERCO** INTERNATIONAL, INC.  
NORTHVALE, NJ 07647

HYDRAULIC SEPARATOR  
ASME RATED

DWN. BY JK DATE 072310  
SCALE NTS  
APPD. \_\_\_\_\_ DATE \_\_\_\_\_

AP-A-870

REV.  
A