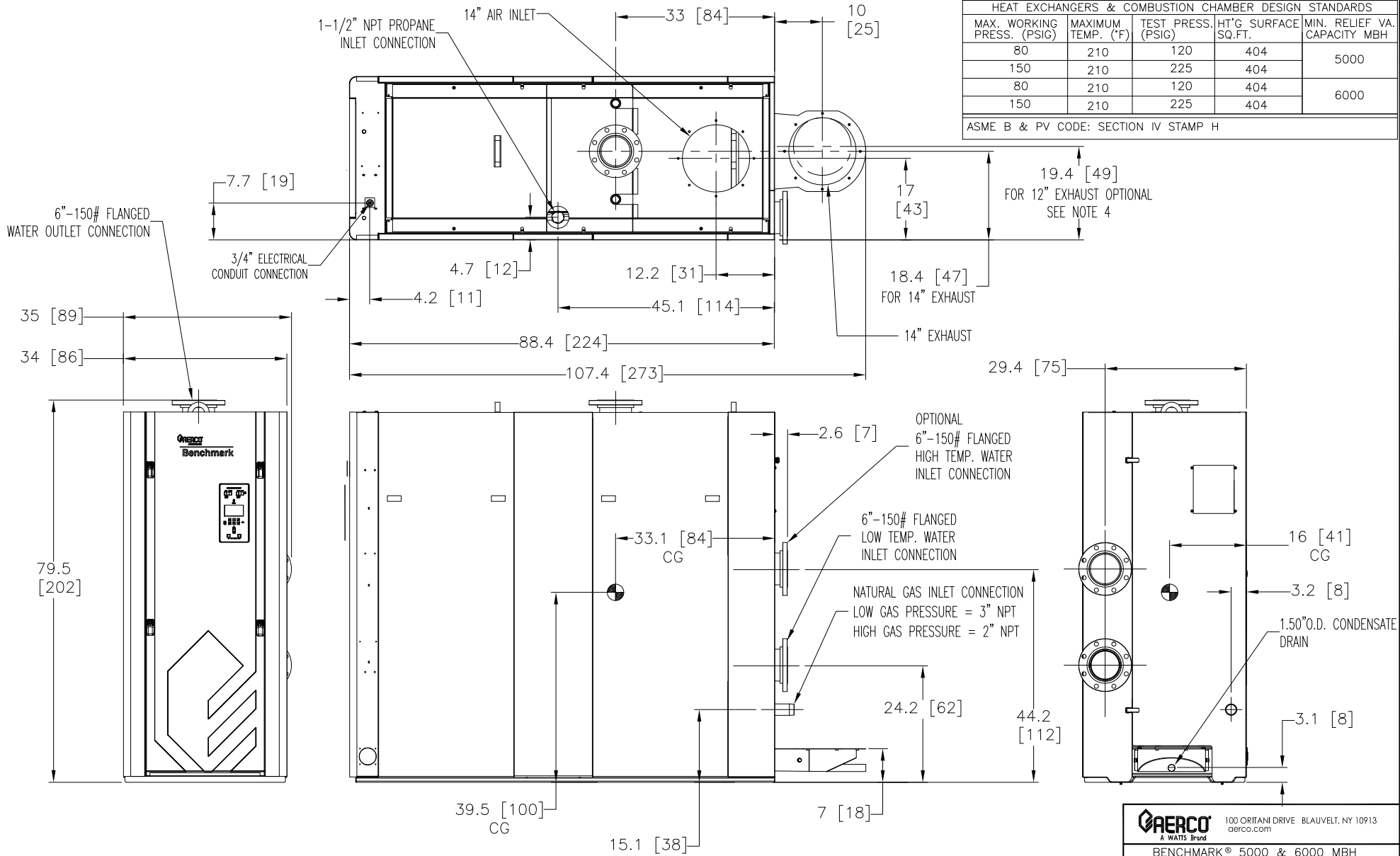


NOTES:

- 1) ALL DIMENSIONS SHOWN ARE IN INCHES (CENTIMETERS).
- 2) RELIEF VALVE, TRIDICATOR & CONDENSATE TRAP ARE INCLUDED SEPARATELY IN SHIPMENT.
- 3) AERCO RESERVES THE RIGHT TO MODIFY BOILER DIMENSIONS WITHOUT PRIOR NOTICE
- 4) FOR 12" EXHAUST VENTING, CONSULT YOUR PREFERRED VENTING MANUFACTURER FOR VENTING ADAPTER.

MATERIALS OF CONSTRUCTION				
PRESSURE VESSEL	SHELL OUTER-1/4" C.S. SA-516 GR.70 OR SA-53 GR.B SHELL INNER-1/4" STAINLESS STEEL, SA-240, 439SS HEAD-1" C.S. SA-516 GR.70 OR SA-53 GR.B EXPANSION JOINT-1/4" STAINLESS STEEL, SA-240, 439SS			
HEAT EXCHANGER	UPPER TUBESHEET- 1/4" STAINLESS STEEL, SA-240, 439SS LOWER TUBESHEET- 1/4" STAINLESS STEEL, SA-240, 439SS TUBES-STAINLESS STEEL, 5/8" O.D. X .049 WALL SA-249, 439SS SHELL-1/4" C.S. SA-53 GRA OR B OR SA-516 GR.70			
INLET MANIFOLD	PIPE-1/4" ST. STL. ASTM A312, 304SS ELBOW-1/4" ST. STL. ASTM A403, 304SS MANIFOLD-1/4" C.S. SA-53 GRA OR B OR SA-516 GR.70			
HEAT EXCHANGERS & COMBUSTION CHAMBER DESIGN STANDARDS				
MAX. WORKING PRESS. (PSIG)	MAXIMUM TEMP. (°F)	TEST PRESS. (PSIG)	HT'G SURFACE SQ.FT.	MIN. RELIEF VA. CAPACITY MBH
80	210	120	404	5000
150	210	225	404	
80	210	120	404	6000
150	210	225	404	
ASME B & PV CODE: SECTION IV STAMP H				



AERCO
A WATTS Brand

100 ORITANI DRIVE BLAUVELT, NY 10913
aerco.com

BENCHMARK® 5000 & 6000 MBH
NATURAL GAS, PROPANE, DUAL FUEL &
V.P.S. BOILER DUAL INLET
DIMENSIONAL DRAWING

DWN. BY: K.S.	DATE: 022718	AP-A-1047	REV. E
SCALE: _____	SIZE: A		
CHKD. _____	APPD. _____		
REV. BY: K.S.	DATE: 062623		