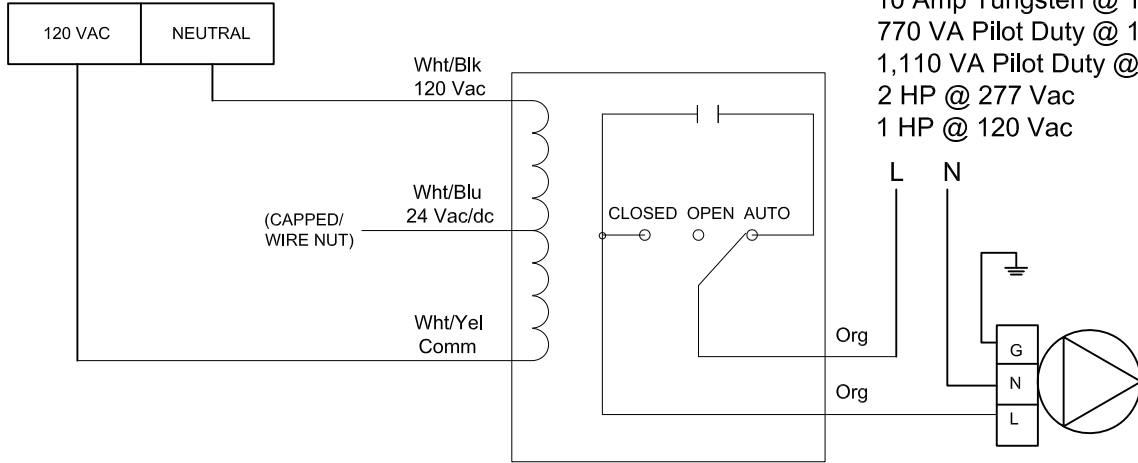


USE THE WIRING DIAGRAMS BELOW WHEN ENABLING PUMP FROM AM SERIES EQUIPMENT

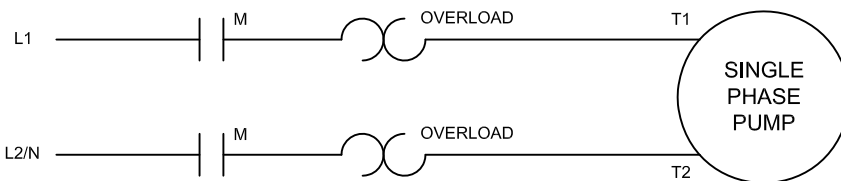
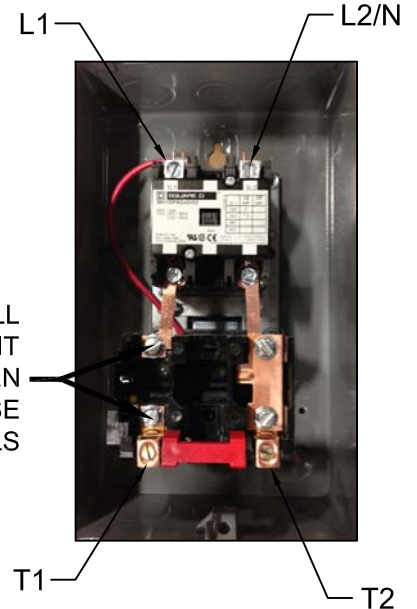
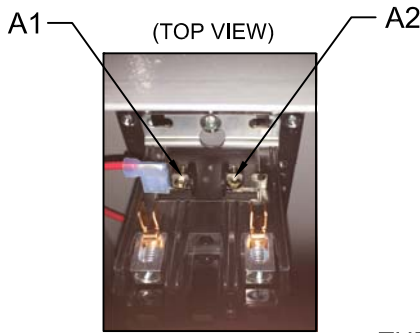
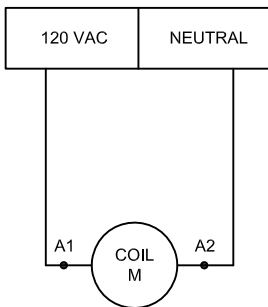
APPLICATION	AM SERIES 120VAC VOLTAGE TERMINALS	
BOILER LOOP PUMP	113	114
DHW PUMP*	(SEE NOTE)	

Contact Ratings:
 20 Amp Resistive @ 277 Vac
 20 Amp Ballast @ 277 Vac (N/O)
 Not rated for Electronic Ballast
 10 Amp Tungsten @ 120 Vac (N/O)
 770 VA Pilot Duty @ 120 Vac
 1,110 VA Pilot Duty @ 277 Vac
 2 HP @ 277 Vac
 1 HP @ 120 Vac



MANUFACTURER: FUNCTIONAL DEVICES
 RELAY MODEL: RIB2401SB

APPLICATION	AM SERIES 120VAC VOLTAGE TERMINALS	
BOILER LOOP PUMP	113	114
DHW PUMP*	(SEE NOTE)	



Full Load Amperes: 40A
 Horsepower Ratings: 3HP (115V, 1 ϕ); 7.5HP (230V, 1 ϕ)

MANUFACTURER: SQUARE D
 CONTACTOR MODEL: 8911DPSG42V02

* DHW PUMP APPLICATION NOTE:
 - IF USING A DIRECT TANK, USE AM TERMINALS 113 & 114
 - IF USING INDIRECT TANK AND/OR HEATING WITH DHW PRIORITY, USE AM TERMINALS 107 (120V) & 108 (N)

AERCO INTERNATIONAL INC. BLAUVELT, NEW YORK 10913		
AM SERIES - PUMP ELECTRICAL CONNECTIONS		
CHKD _____	AP-A-1031	A
APPD _____		