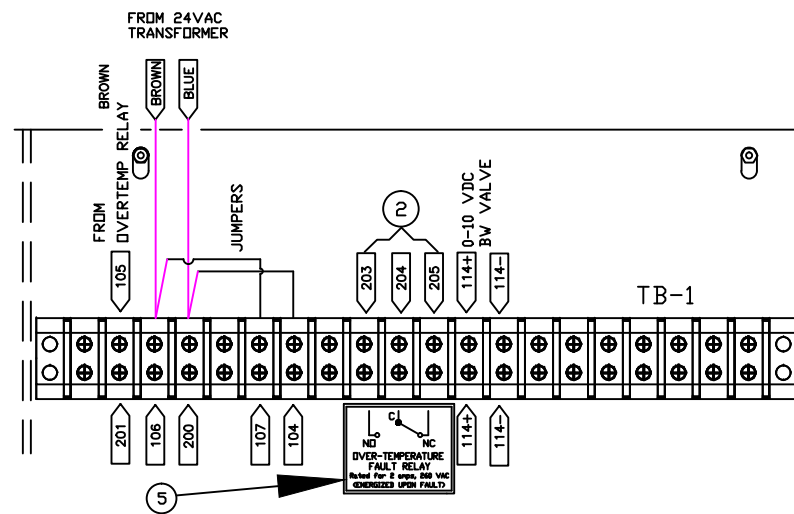


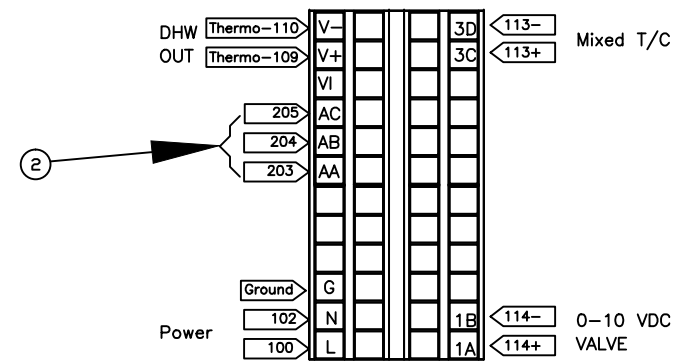
PANEL PARTIAL VIEW – ECS BOX  
(PANEL OPEN)



PANEL PARTIAL VIEW – SMARTPLATE BOX  
(PANEL OPEN)

WIRING INSTRUCTIONS

1. Open the control enclosure and flip down the front panel.
3. Attach the relay label (item 5) below TB-1 terminal block (See panel partial view).
4. Locate terminals AA, AB and AC on the rear of the Eurotherm control.
5. Connect the open end of each wire (item 2) to these terminals—wire #203 to AA, wire #204 to AB, and wire #205 to AC. (See temperature controller view)
6. Connect the opposite open end of item 2 to TB-1 terminals as shown on Panel partial view for ECS and Smartplate box.
7. After checking your connections, tie harness (item 2) with the cable ties (item 4) to existing bundle of wires spacing them evenly along the wires.
8. Stick the cable tie holder (item 3) to the side of the box and tie Harness to it.
9. Close and fasten the front panel of the control enclosure before installing on the unit.



TEMPERATURE CONTROLLER VIEW

ITEM	PART NO.	QTY	DESCRIPTION
5	72016	1	LABEL, FAULT RELAY
4	122100	5	CABLE TIE
3	122101	1	CABLE TIE HOLDER
2	63009-65	1	HARNESS, FAULT RELAY
ECS REMOTE RELAY OPTION KIT PARTS LIST			

NOTES:

- 1) RELAY OPTIONAL KIT IS P/N 69018.

**AERCO** INTERNATIONAL, INC.  
Blauvelt, NY 10913

ECS/SMARTPLATE REMOTE RELAY  
OPTION KIT

DWN.BY K.S. DATE 033115  
SCALE \_\_\_\_\_ SIZE A  
CHKD. \_\_\_\_\_ APPD. \_\_\_\_\_  
REV.DATE 102215

AP-A-1007

REV.  
B