

Technical Data Sheet

Innovation 600-1350 Water Heaters

The AERCO Innovation Water Heater utilizes state-of-the-art technology to easily meet highly diverse, demanding commercial and industrial hot water requirements in a compact and reliable condensing design. The durable high efficiency helical firetube heat exchanger is time tested to be impervious to thermal stress for an extended life. The all stainless steel construction maximizes longevity in the condensing application and the corrugated tubes increase effective heat transfer surface area for optimal thermal efficiencies up to 99%. Enhanced waterside flow distribution maintains constant minimum velocities across the heat exchanger; this keeps solids in suspension and greatly reduces scale dropout to maintain high efficiency performance and long life.

The advanced C-More control system of the Innovation incorporates dynamic feed-forward sensing for precise modulation of its turndown air/fuel delivery system. These controls fire the unit to accurately match load requirements and produce tight hot water outlet temperature control. C-More includes onboard multi-unit sequencing logic, eliminating a need for separate sequencing panel. Wasteful overshooting and cycling are virtually eliminated as is the need for storage tanks, mixing valves and other temperature averaging components in most applications. The set point is adjustable from 50°F to 190°F and control to +/- 4°F is easily achieved. Sidewall, through-the-roof, and sealed combustion capabilities provide broad installation flexibility. The small foot print, doorway size, and quiet operation make it ideal for retrofit. With its tight temperature control, high efficiency, reliability and longevity the AERCO Innovation is truly a unique and advanced design.



U.S. Patent No.: 9,243,848

Features

- Precise Temperature Control +/- 4°F
- Fully Modulating
- Condensing Design
- Stainless Steel Heat Exchanger
- Compact, Space Efficient Design
- Natural Gas or Propane
- Outlet Water Temperature of 50° to 190°F
- UL, CUL Listed for Closet Installation on Combustible Flooring
- 160 PSIG ASME Working Pressure Certified
- Direct or Conventional Vent with PVC, CPVC, PP, or AL29-4C Materials
- Whisper quiet operation
- Remote Alarm Contacts
- Sealed Combustion
- UL, CUL Listed, FM Compliant, ASME Section IV (HLW) Stamped

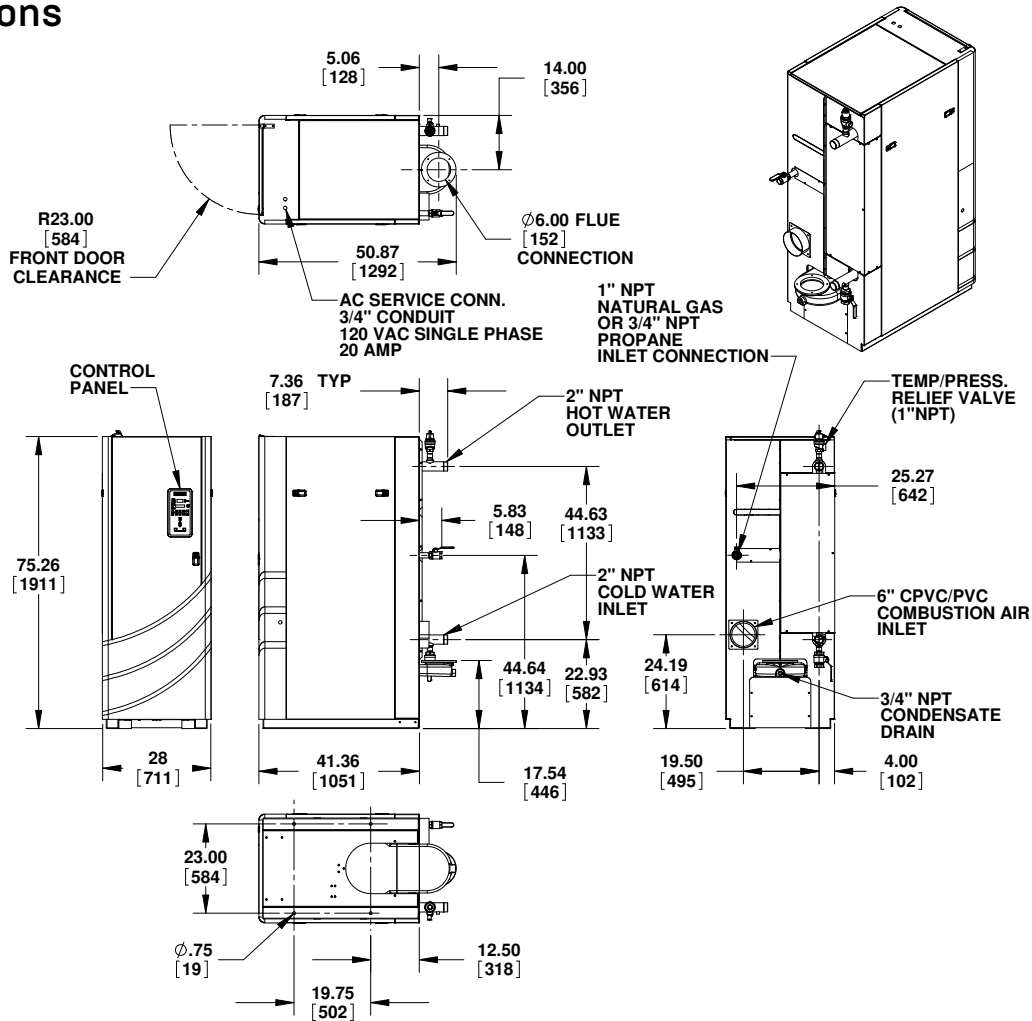
Recovery Capacity*

Innovation 600 (INN 600)									
Temperature Rise (°F)	60°	70°	80°	90°	100°	110°	120°	130°	140°
Gallons Per Minute	19.3	16.5	14.5	12.8	11.6	10.5	9.6	8.9	8.3
Gallons Per Hour	1158	990	870	768	696	630	576	534	498
Innovation 800 (INN 800)									
Temperature Rise (°F)	60°	70°	80°	90°	100°	110°	120°	130°	140°
Gallons Per Minute	25.7	22.0	19.3	17.1	15.4	14.0	12.8	11.9	11.0
Gallons Per Hour	1542	1320	1158	1026	924	840	768	714	660
Innovation 1060 (INN 1060)									
Temperature Rise (°F)	60°	70°	80°	90°	100°	110°	120°	130°	140°
Gallons Per Minute	34.0	29.2	25.6	22.7	20.4	18.6	17.0	15.7	14.6
Gallons Per Hour	2040	1752	1536	1362	1224	1116	1020	942	876
Innovation 1350 (INN1350)									
Temperature Rise (°F)	60°	70°	80°	90°	100°	110°	120°	130°	140°
Gallons Per Minute	43.6	37.4	32.8	29.1	26.2	23.8	21.8	20.2	18.7
Gallons Per Hour	2616	2244	1968	1746	1572	1428	1308	1212	1122

*In condensing mode <2000 ft above sea level

Dimensions

[Inches]



Specifications

	INN 600	INN 800	INN 1060	INN 1350
Adjustable Temperature Control	50°F to 190°F			
Ambient Temperature	0°F to 130°F			
Accuracy	+/-4°F			
Input	600,000 BTUH	800,000 BTUH	1,060,000 BTUH	1,350,000 BTUH
Net Output	552,000 BTUH	736,000 BTUH	975,000 BTUH	1,242,000 BTUH
Turndown Ratio (up to)	14:1	18:1	24:1	30:1
Flue and Air Intake	4" Diameter	6" Diameter		
Flue Material (per local code)	PVC, CPVC, PP or AL29-4C			
Water Inlet & Outlet	2" NPT Male			
Gas Connection- Natural Gas	1" NPT Male			
Gas Connection- Propane	1/2" NPT Male		3/4" NPT Male	
Gas Pressure Requirements	14" WC Max			
Gas Pressure Requirements (Nat. Gas)	4" WC Minimum @ Full Load			
Gas Pressure Requirements (Propane)	6" WC Minimum @ Full Load			
Maximum Continuous Water Flow	50 GPM			
Condensate Connection	3/4"NPT Female			
Maximum Condensate Flow	4.5 GPH	6 GPH	8 GPH	11 GPH
Pressure Rating	160 PSIG @ 210°F			
NOx Emissions Certifications	SCAQMD, TCEQ			
Standard Listing & Approvals	UL, CUL, ASME, (HLW)			
Gas Train Options	FM Compliant or Factory Installed, Double Block and Bleed			
Electrical Requirements	120VAC, Single Phase, 60 Hz 20 Amp (11 FLA)			
Water Pressure Drop @ 15 gpm	1.25 psi			
Water Pressure Drop @ 30 gpm	2 psi			
Water Volume	25.3 gallons	25.3 gallons	22.0 gallons	19.9 gallons
Weight, Installed	980 lbs (dry), 1,202 lbs (wet)	980 lbs (dry), 1,202 lbs (wet)	1000 lbs (dry), 1,190 lbs (wet)	1,050 lbs (dry), 1,222 lbs (wet)
Weight Shipping	1,080 lbs	1,080 lbs	1,100 lbs	1,150 lbs



Heat | Hot Water | Energy Recovery Solutions

AERCO International, Inc. • 100 Oritani Drive • Blauvelt, NY 10913
USA: T: (845) 580-8000 • Toll Free: (800) 526-0288 • AERCO.com