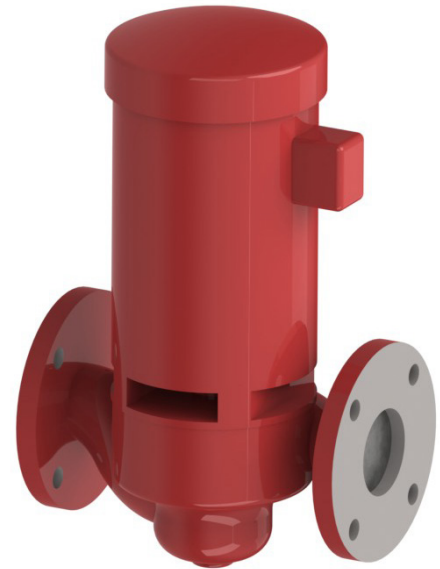


Technical Data Sheet

Constant Speed Pump Kits

These constant speed pumps are specifically selected for hydronic heating. They are ideal for the boiler loop of Mopdulex EXT and AM Series Boiler installations. These kits include a circuit setter which allows for setting flow rates that meet the minimum and do not exceed the maximum allowed through the boiler. Pump Kits 99127-1 to 99127-8 are in-line and permanently lubricated for ease of maintenance with a cast iron body. Pump Kits 99208-1 to 99208-7 incorporate 'back-pull-out' design which allows service without disturbing the piping.



Actual pump may vary from illustration

Features

- In-line mounted pump design
- Cast Iron Body
- Carbon/Stainless Steel shaft
- Durable Carbon/Silicon-carbide seals
- Permanently lubricated/grease lubricated motors
- Max. working pressure: 150 psi
- Max. operating temperature: 225°F

Selection Tables

	50°F Temp Rise			40°F Temp Rise			30°F Temp Rise			20°F Temp Rise		
	Flow (GPM)	ΔP (Ft/Hd)	Pump Kit	Flow (GPM)	ΔP (Ft/Hd)	Pump Kit	Flow (GPM)	ΔP (Ft/Hd)	Pump Kit	Flow (GPM)	ΔP (Ft/Hd)	Pump Kit
EXT 321	12	1.6	99127-1	15	2.4	99127-1	20	4.2	99127-1	28	8.6	99127-2
EXT 481	18	2.1	99127-1	22	3.3	99127-1	30	5.7	99127-2	42	11.8	99127-3
EXT 641	24	1.7	99127-1	30	2.6	99127-2	39	4.6	99127-3	56	9.2	99127-4
EXT 802	30	1.6	99127-2	37	2.6	99127-2	49	4.6	99127-3	71	9.7	99127-4
EXT 962	35	1.7	99127-2	44	2.7	99127-3	59	4.8	99127-4	85	10	99127-5
EXT 1123	41	1.8	99127-3	52	2.7	99127-3	69	4.8	99127-4	99	9.5	99127-5

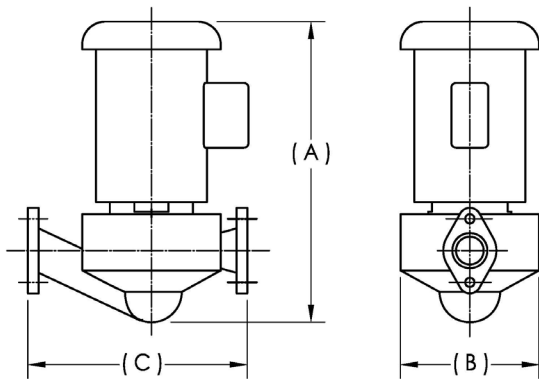
	50°F Temp Rise			40°F Temp Rise			30°F Temp Rise			25°F Temp Rise		
	Flow (GPM)	ΔP (Ft/Hd)	Pump Kit	Flow (GPM)	ΔP (Ft/Hd)	Pump Kit	Flow (GPM)	ΔP (Ft/Hd)	Pump Kit	Flow (GPM)	ΔP (Ft/Hd)	Pump Kit
EXT 1530	56	2.6	99127-6	70	3.6	99127-7	94	5.2	99127-7	113	7.9	99208-4
EXT 1912	70	2.8	99127-7	88	4.3	99127-7	117	7.2	99208-4	141	11.8	99208-5
EXT 2295	84	3.3	99127-7	106	4.9	99127-7	141	9.5	99208-5	169	16.4	99208-7
EXT 2677	99	3.6	99127-7	123	5.2	99208-3	164	9.8	99208-5	197	17.7	99208-7
EXT 3060	113	3	99127-7	141	4.6	99208-3	188	8.5	99208-6	225	13.1	99208-7

	100°F Temp Rise			70°F Temp Rise			50°F Temp Rise			40°F Temp Rise		
	Flow [GPM]	ΔP [Ft/Hd]	Pump Kit	Flow [GPM]	ΔP [Ft/Hd]	Pump Kit	Flow [GPM]	ΔP [Ft/Hd]	Pump Kit	Flow [GPM]	ΔP [Ft/Hd]	Pump Kit
AM 399	7	3	99127-1	10	3	99127-1	14.7	5	99127-1	18.4	7.5	99127-1
AM 500	9	4	99127-1	13	7	99127-1	18.4	8	99127-1	23	13	99127-1
AM 750	14	5	99127-1	20	7	99127-1	27.6	13	99127-1	34.5	18.5	99127-8
AM 1000	18	3	99127-1	26	5.5	99127-1	36.8	10	99127-3	46	15	99127-5

See Primary loop design guides C400.2 (MLX EXT) and C400.3 (AM Boiler) for details.

Dimensions

	Electrical Requirement	FLA	hp	Flange Size	A	B	C
99127-1	115V/1PH/60Hz	2.1A	1/6	1-1/2" NPT	8-5/8"	4-3/8"	6-3/8"
99127-2	115V/1PH/60Hz	2.1A	1/6	1-1/2" NPT	8-5/8"	4-3/8"	6-3/8"
99127-3	115V/1PH/60Hz	4.8A	2/5	2" NPT	10-3/4"	5-1/8"	8-1/2"
99127-4	115V/1PH/60Hz	4.8A	2/5	2" NPT	10-3/4"	5-1/8"	8-1/2"
99127-5	115V/230V/1PH/60Hz	13.8A (115V)/6.9A (230V)	3/4	1-1/2" NPT	16"	7-7/8"	11-1/2"
99127-6	115V/1PH/60Hz	2.1A	1/6	2" NPT	9-15/16"	4-5/8"	8-1/2"
99127-7	115V/1PH/60Hz	4.8A	2/5	3" NPT	10-3/4"	5-1/8"	8-1/2"
99127-8	115V/230V/1PH/60Hz	13.8A (115V)/6.9A (230V)	3/4	1-1/2" NPT	16"	7-7/8"	11-1/2"
99208-3	115V/208-30V/1PH/60Hz	9.8A (115V)/4.9A (230V)	1/2	3" NPT	16-1/2"	8"	12"
99208-4	115V/208-30V/1PH/60Hz	13.8A (115V)/6.9A (230V)	3/4	3" NPT	17-1/2"	8"	12"
99208-5	115V/208-30V/1PH/60Hz	16A (115V)/8A (230V)	1	3" NPT	18-1/4"	8"	12"
99208-6	115V/208-30V/1PH/60Hz	20A (115V)/10A (230V)	1-1/2	3" NPT	18-1/4"	8"	12"
99208-7	115V/208-30V/1PH/60Hz	34A (115V)/17A (230V)	3	3" NPT	18-3/4"	8"	12"



Actual pump may vary from illustration



Heat | Hot Water | Energy Recovery Solutions

AERCO International, Inc. • 100 Oritani Drive • Blauvelt, NY 10913
USA: T: (845) 580-8000 • Toll Free: (800) 526-0288 • AERCO.com