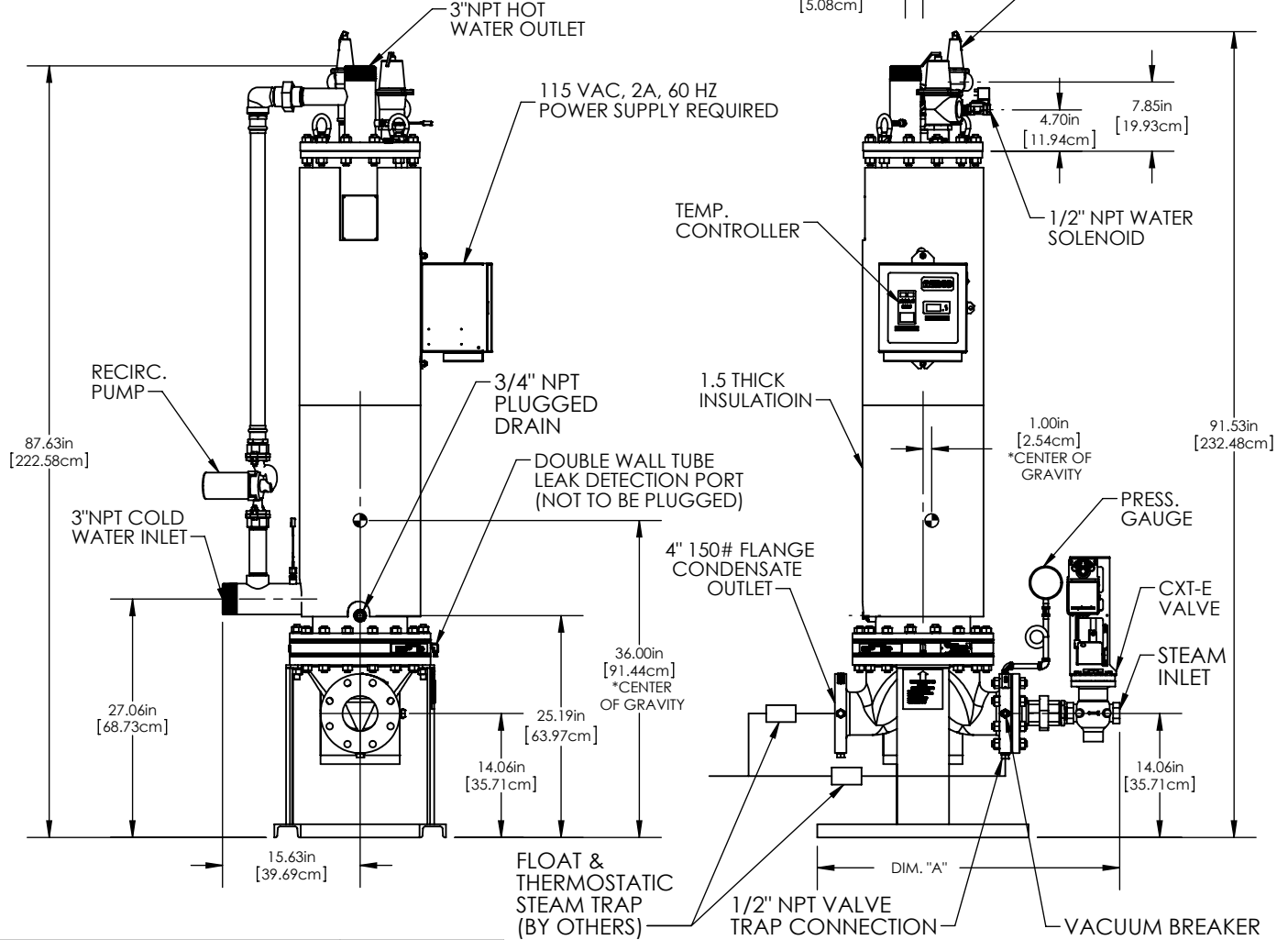
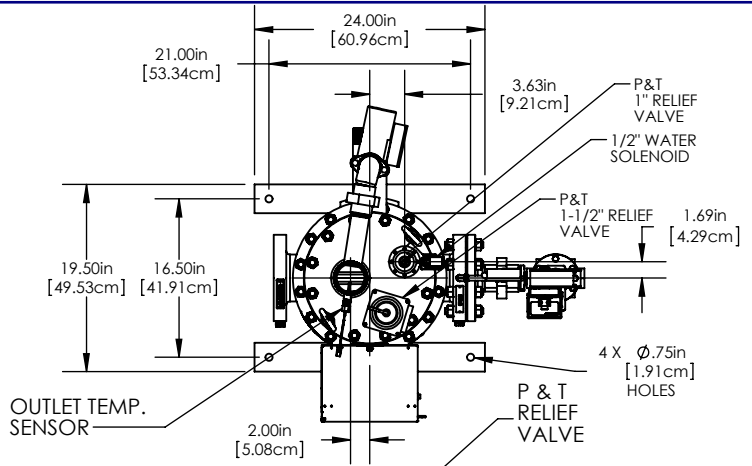


MATERIALS OF CONSTRUCTION	
SHELL	304 S.S. SA-240; SCH. 10S
HEADS	UPPER, 1.0" THICK PLT., SA-240, 304L S.S. LOWER, CAST DUCTILE IRON SA-395
TUBES	COPPER, SB-111 DOUBLE WALL, OUTER, 0.750"OD x 0.049" WALL INNER, 0.625"OD x 0.025" WALL
TUBESHEET	UPPER TUBESHEET: 0.25" NAVAL BRASS, SB-171, CDA 464 LOWER TUBESHEET LINER: 0.25" NAVAL BRASS, SB-171, CDA 464 LOWER TUBESHEET: 0.88" SA-515, GR. 70 C.S



CONTROL VALVE SIZE IN(CM)	DIM "A" in./sm
1"(2.54) SCREWED END	35.43/ 89.99
1-1/4(3.18) SCREWED END	35.58/ 90.37
1-1/2(3.81) SCREWED END	34.35/ 87.25
2"(5.08) SCREWED END	35.00/ 88.90
2-1/2(6.35) 150# ANSI FLANGED END	40.12/ 101.90
3"(7.62) 150# ANSI FLANGED END	40.87/ 103.81
4"(10.18) 150# ANSI FLANGED END	35.93/ 91.26

HEAT EXCHANGER DESIGN STANDARDS			
	MAX. WORKING PRESSURE, PSIG (kPa)	MAX. TEMP. °F (°C)	TEST PRESS., PSIG (kPa)
SHELL SIDE	180 (1241)	250 (121)	270 (1862) COLD
TUBE SIDE	52 (359)	300 (149)	500 (3447)

OPERATING CONDITIONS	
SHELL	IN/OUT TEMP. °F(°C)
CAPACITY, GPM(L/S)	
TUBES	PRESSURE TO VALVE, PSIG(kPa)
FLOW LB/HR (Kg/S)	

\*NOTE: CENTER OF GRAVITY IS WITHOUT VALVE LINE.

ASME B&PV CODE SEC. VIII, DIV. 1      STAMP U

RELIEF VALVES SET AT °F, PSI

MODEL SWDW-45/ [ ] [ ] [ ] / EC (VALVE SIZE)

**AERCO** INTERNATIONAL INC. Blauvelt, NY 10913

DW-45 S/W DOUBLE WALL HEATER PACKAGED WITH CXT-E VALVE DIMENSIONAL DRAWING			
DWN. BY	DATE	DWG. NO.	REV
BR	05/28/2013		
SCALE	NTS		
CHD BY	APPD	<b>AP-A-930</b>	<b>C</b>