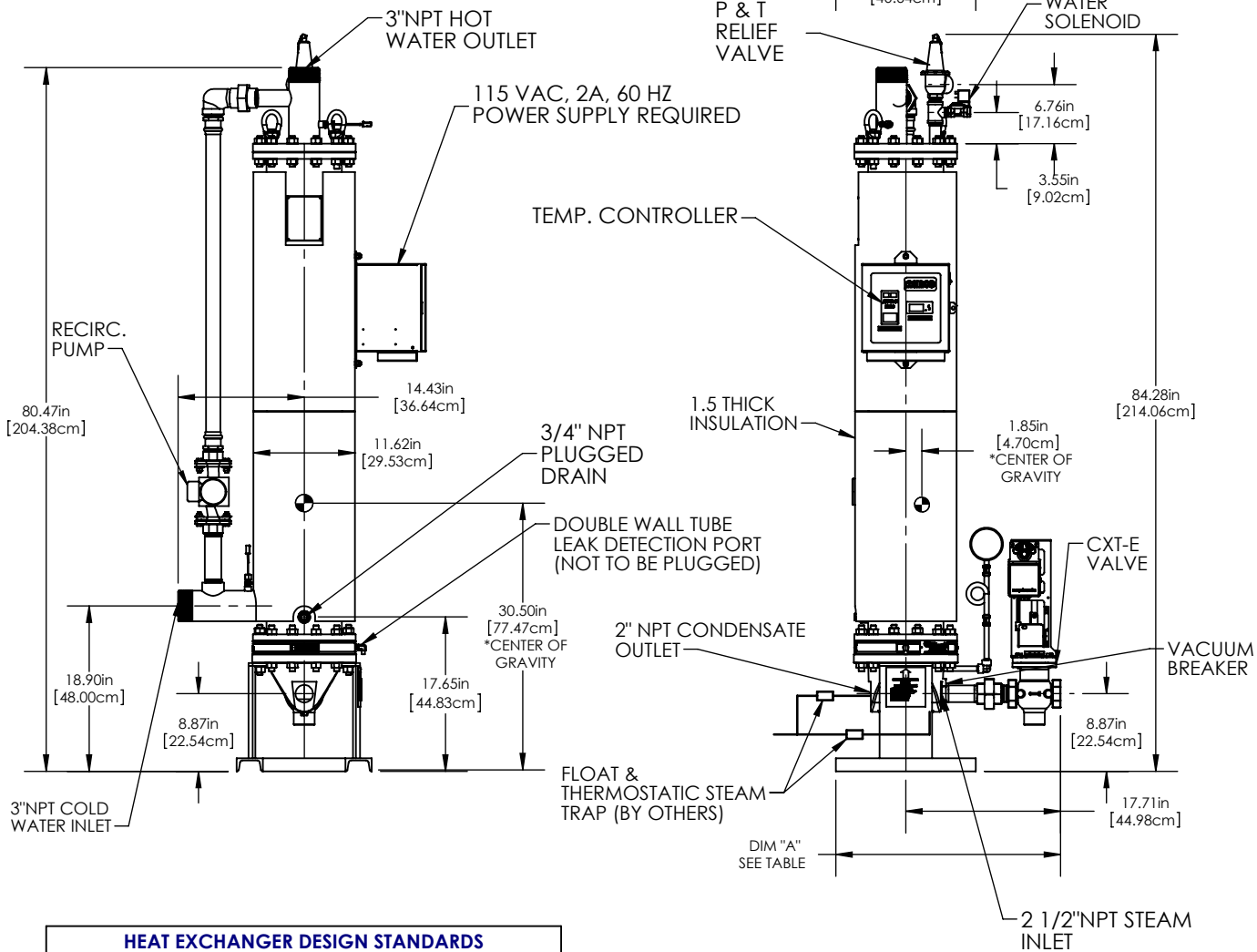
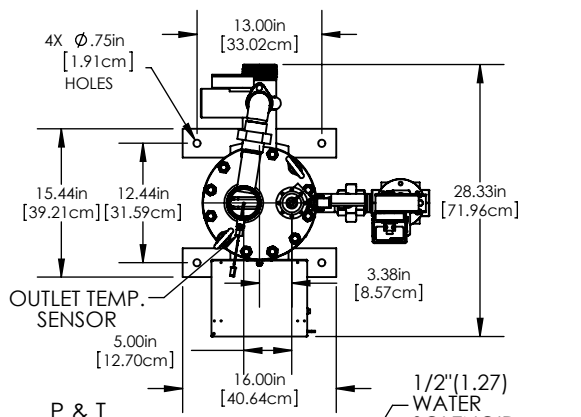


MATERIALS OF CONSTRUCTION	
SHELL	304 S.S. SA-240; SCH. 10S
HEADS	UPPER, 1.0" THICK PLT., SA-240, 304L S.S. LOWER, CAST DUCTILE IRON SA-395
TUBES	COPPER, SB-111 DOUBLE WALL, OUTER, 0.750"OD x 0.049" WALL INNER, 0.625"OD x 0.025" WALL
TUBESHEET	UPPER TUBESHEET: 0.25" NAVAL BRASS, SB-171, CDA 464 LOWER TUBESHEET LINER: 0.25" NAVAL BRASS, SB-171, CDA 464 LOWER TUBESHEET: 0.88" SA-515, GR. 70 C.S



HEAT EXCHANGER DESIGN STANDARDS			
	MAX. WORKING PRESSURE, PSIG (kPa)	MAX. TEMP. °F (°C)	TEST PRESS. PSIG (kPa)
SHELL SIDE	185 (1276)	400 (204)	278 (1917) COLD
TUBE SIDE	52 (359)	300 (149)	500 (3447)

*NOTE: CENTER OF GRAVITY IS WITHOUT VALVE LINE.

ASME B&PV CODE SEC. VIII, DIV. 1 STAMP U

RELIEF VALVES SET AT °F, PSI

MODEL SWDW-24 / / EC (VALVE SIZE)

AERCO INTERNATIONAL INC. Blauvelt, NY 10913

DW-24 S/W DOUBLE WALL HEATER PACKAGED WITH CXT-E VALVE DIMENSIONAL DRAWING

DWN. BY BR	DATE 05/28/2013	DWG. NO.:	REV
SCALE NTS	SIE	AP-A-924	C
CHD BY APPD			

CONTROL VALVE SIZE IN(CM)	DIM "A" IN/CM
1"(2.54) SCREWED END	25.9/65.8
1-1/4(3.18) SCREWED END	25.6/65.0
1-1/2"(3.81) SCREWED END	25.7/65.3
2"(5.08) SCREWED END	27.2/69.1
2-1/2"(6.35) 150# ANSI FLANGED END	31.4/79.8
3"(7.62) 150# ANSI FLANGED END	32.3/82.0
4"(10.18) SEE AP-A-928	SEE AP-A-928

OPERATING CONDITIONS	
SHELL	CAPACITY, GPM(L/S)
	IN/OUT TEMP. °F(°C)
TUBES	FLOW LB/HR (Kg/S)
	PRESSURE TO VALVE, PSIG(kPa)