

SPECIFICATIONS

FLOAT AND THERMOSTATIC

BODY AND COVER: CAST IRON 30,000 PSI TENSILE

VALVE PIN AND SEAT: STAINLESS STEEL (HARDENED)

FLOAT: STAINLESS STEEL

LEVER ASSEMBLY: STAINLESS STEEL

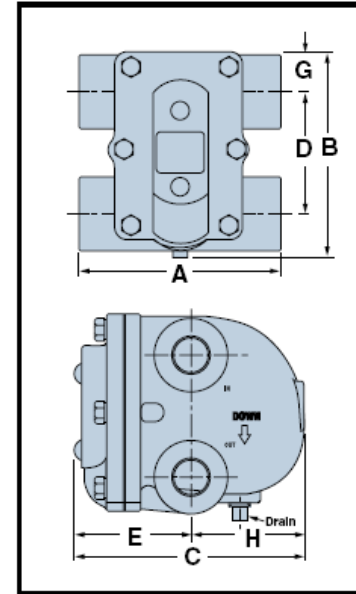
THERMOSTATIC AIR VENT: STAINLESS STEEL CAGE AND THERMAL ELEMENT

COVER BOLTS: GRADE 5

99136-11

DIMENSIONS in (mm)

PART #	CONNECTION SIZE (IN.)	A	B	C	D	E	G	H	WEIGHT LBS (KG)
99136-11	3/4	5-1/2 (140)	5-19/32 (142)	6-1/2 (165)	3-5/16 (84)	3-13/32 (86)	1-5/64 (27)	3-1/16 (78)	12 (5.4)



Capacities (Gross Ratings)

PART #	CONNECTION SIZE in.	ORIFICE SIZE in. (mm)	Pressure Differential in Pounds Per Square Inch (bar)						
			1/4 (0.017)	1/2 (0.035)	1 (0.07)	2 (0.14)	5 (0.35)	10 (0.69)	15 (1.0)
			Capacities in Pounds of Condensate Per Hour (kg/hr)						
99136-11	3/4	.166 (4.2)	160 (72)	210 (95)	280 (125)	360 (165)	520 (235)	700 (320)	800 (360)

Note:

- Maximum steam inlet pressure = 75 PSIG.

IMPORTANT:

- Discharge piping from the steam trap must drain by gravity/downhill to atmosphere or vented receiver.
- Do NOT drain to condensate return system or any system that will cause lift/backpressure.

AERCO INTERNATIONAL, INC.
NORTHVALE, NJ 07647

VALVE TRAP / DRIP TRAP 75 PSI
FLOAT AND THERMOSTATIC

DWN.BY_CZ DATE_093010
SCALE _____ SIZE _____
CHKD. _____ APPD. _____
REV. DATE _____

AP-A-886

REV.
A