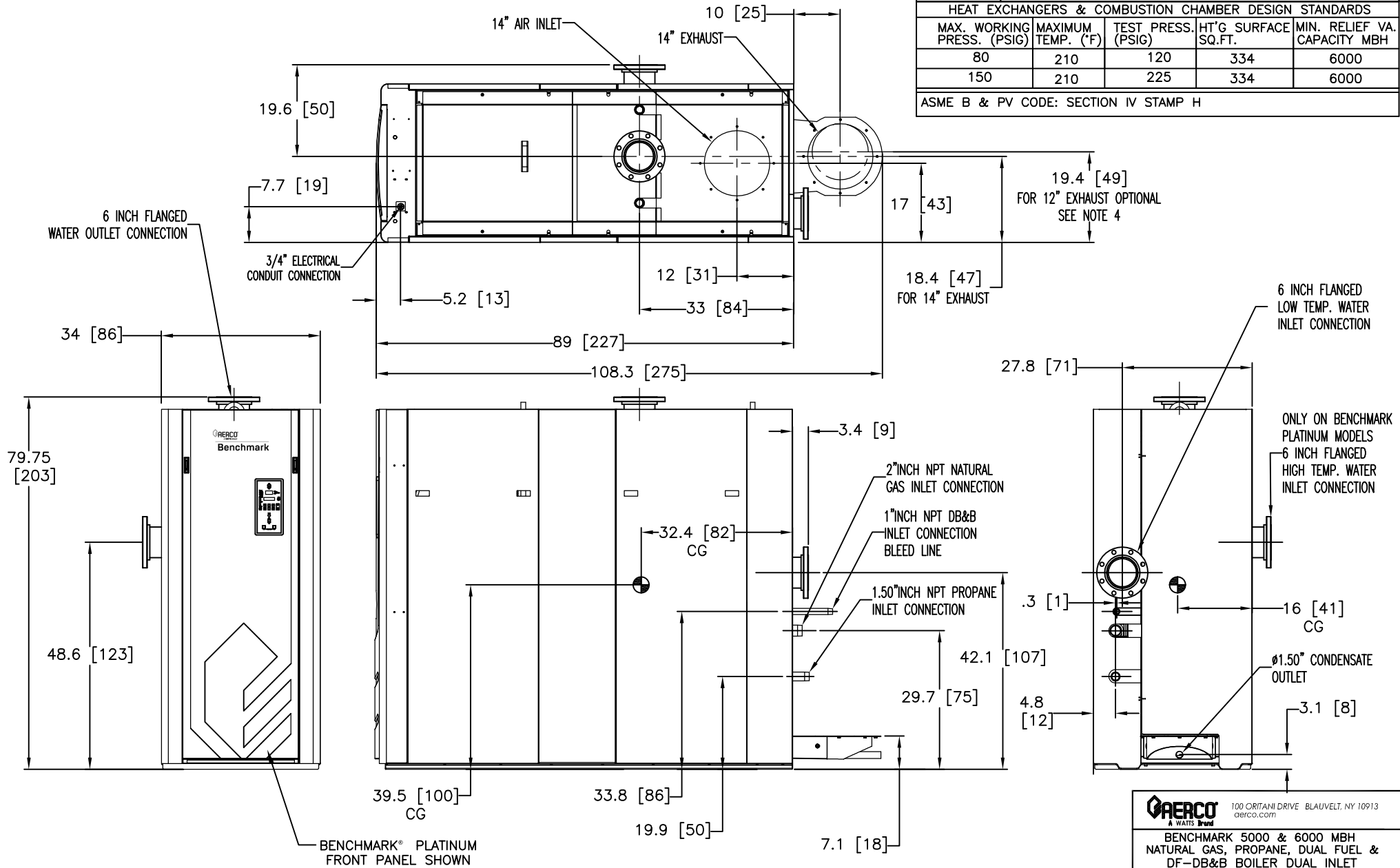


- NOTES:
- 1) ALL DIMENSIONS SHOWN ARE IN INCHES (CENTIMETERS).
  - 2) RELIEF VALVE, TRIDICATOR & CONDENSATE TRAP ARE INCLUDED SEPARATELY IN SHIPMENT.
  - 3) AERCO RESERVES THE RIGHT TO MODIFY BOILER DIMENSIONS WITHOUT PRIOR NOTICE
  - 4) FOR 12" EXHAUST VENTING, USE OPTIONAL ADAPTER AS REQUIRED.
  - 5) BENCHMARK® PLATINUM SHOWN. SAME DIMENSIONS APPLY TO STANDARD BENCHMARK MODELS.

MATERIALS OF CONSTRUCTION				
PRESSURE VESSEL	SHELL OUTER-1/4" C.S. SA-516 GR.70 OR SA-53 GR.B			
	SHELL INNER-1/4" STAINLESS STEEL, SA-240, 439SS			
	HEAD-1" C.S. SA-516 GR.70 OR SA-53 GR.B			
HEAT EXCHANGER	EXPANSION JOINT-1/4" STAINLESS STEEL, SA-240, 439SS			
	UPPER TUBESHEET- 1/4" STAINLESS STEEL, SA-240, 439SS			
	LOWER TUBESHEET- 1/4" STAINLESS STEEL, SA-240, 439SS			
TUBES-STAINLESS STEEL, 5/8" O.D. X .049 WALL				
SA-249, 439SS				
SHELL-1/4" C.S. SA-53 GR.A OR B OR SA-516 GR.70				
HEAT EXCHANGERS & COMBUSTION CHAMBER DESIGN STANDARDS				
MAX. WORKING PRESS. (PSIG)	MAXIMUM TEMP. (°F)	TEST PRESS. (PSIG)	HT'G SURFACE SQ.FT.	MIN. RELIEF VA. CAPACITY MBH
80	210	120	334	6000
150	210	225	334	6000
ASME B & PV CODE: SECTION IV STAMP H				



**AERCO** 100 ORITANI DRIVE BLAUVELT, NY 10913  
a WATTS brand aerco.com

BENCHMARK 5000 & 6000 MBH  
NATURAL GAS, PROPANE, DUAL FUEL &  
DF-DB&B BOILER DUAL INLET  
DIMENSIONAL DRAWING

DWN. BY: K.S.	DATE: 100114	REV.
SCALE: _____	SIZE: A	C
CHKD. _____	APPD. _____	
REV. DATE: _____	AP-A-1001	